

INSTALLATION INSTRUCTIONS

TAILLIGHT GUARD

06-On CHEVY TRAILBLAZER

PART

PARTS LIST:

1	Driver/Left Taillight Guard	2	4-.75mm x 15mm Phillips Screws
1	Passenger/Right Taillight Guard	2	4mm Lock Washers
2	Support Brackets	2	4mm ID x 9mm OD x 1mm Flat Washers
2	Double Sided Tape Strips		

PROCEDURE:

1. **REMOVE CONTENTS FROM BOX. VERIFY ALL PARTS ARE PRESENT. READ INSTRUCTIONS CAREFULLY BEFORE STARTING INSTALLATION.**
2. Open the rear door and remove the driver's side screws holding the taillight housing.
3. Grasp the taillight assembly with one hand and pull gently. **NOTE:** Be sure to pull straight out towards the rear of the vehicle to avoid possible damage. This is the same procedure required to change a burn out taillight bulb in the assembly. For more info see owner's manual on replacing burn taillight bulbs.
4. Once you have removed the taillight housing, carefully disconnect the wire harness and set aside.
5. Attach the bent side of one of the Support Brackets to the driver side Taillight Guard with the included (1) 4mm x 15mm Phillips Screw, (1) 4mm Lock Washer, and (1) 4mm Flat Washer. Mount the Taillight Guard without taillight lens onto vehicle using the factory screws. Align Taillight Guard, and then mark the mounting location of the Support Bracket (**Figure 1**).
6. Remove Taillight Guard from vehicle and then remove the Support Bracket from Taillight Guard.
7. Attach the Double Sided Tape onto Support Bracket and then mount it onto vehicle (**Figure 2 & 3**).
8. Reconnect the wire harness and snap taillight back to the vehicle. Attach Taillight Guard to vehicle using the factory screws (**Figure 4**), then onto Support Bracket using the hardware listed in step 5 (**Figure 5**).
9. Adjust Taillight Guard properly, and then tighten all hardware at this time.
10. Repeat steps 2 – 10 for passenger side Taillight Guard.
11. Do periodic inspections to the installation to make sure that all hardware is secure and tight.

To protect your investment, wax this product after installing. Regular waxing is recommended to add a protective layer over the finish. Do not use any type of polish or wax that may contain abrasives that could damage the finish.

For stainless steel: Aluminum polish may be used to polish small scratches and scuffs on the finish. Mild soap may be used also to clean the Sidebar.

For gloss black finishes: Mild soap may be used to clean the Sidebar.

(Support Bracket)
4mm x 15mm Phillips Screw
4mm Lock Washer
4mm Flat Washer

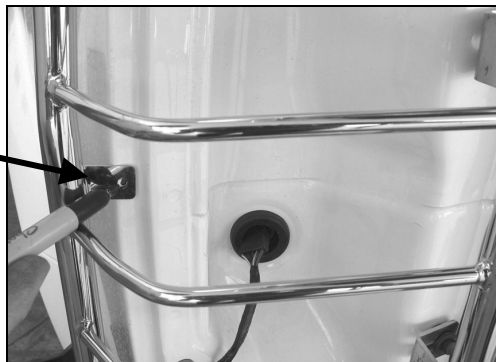


Fig 1

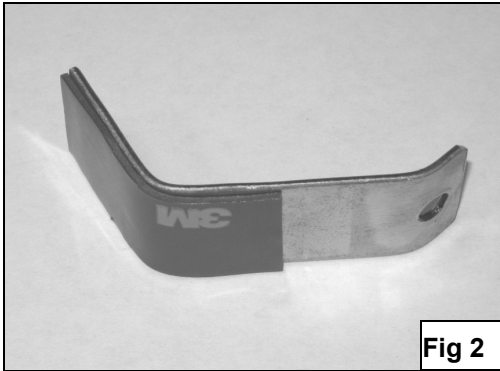
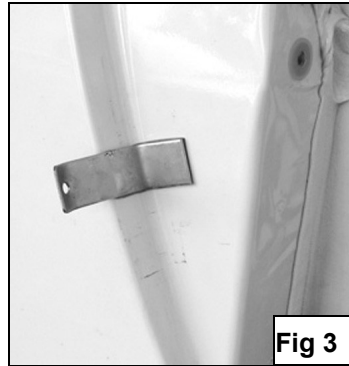
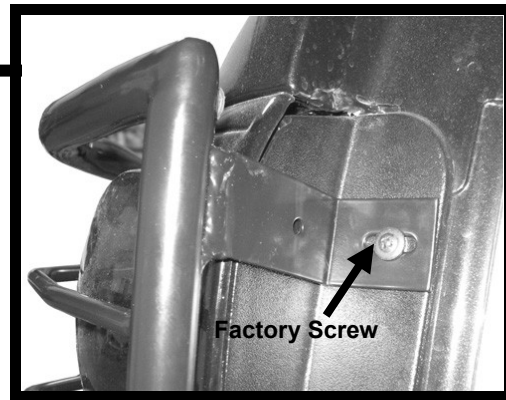


Fig 2

Fig 3



Fig 4



Factory Screw

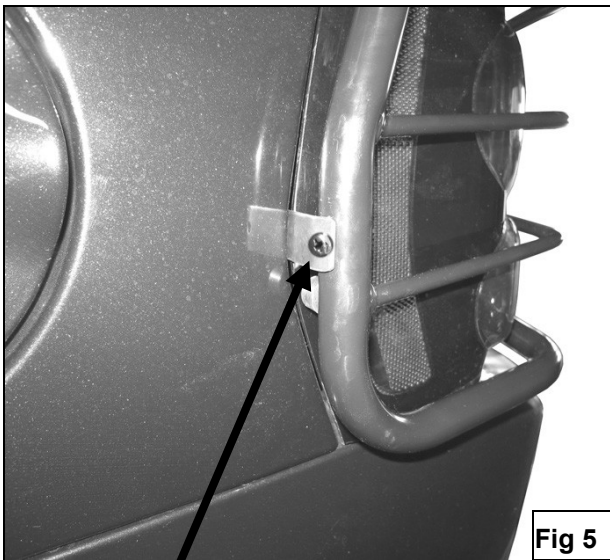


Fig 5



Fig 6