

INSTALLATION INSTRUCTIONS

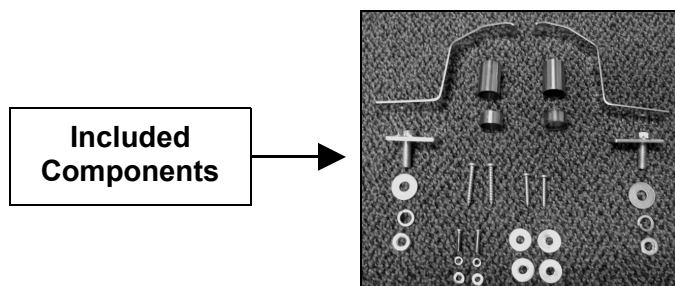
TAIL LIGHT GUARDS 07 FORD EXPLORER SPORT TRAC PART NUMBER 31280 / 31287

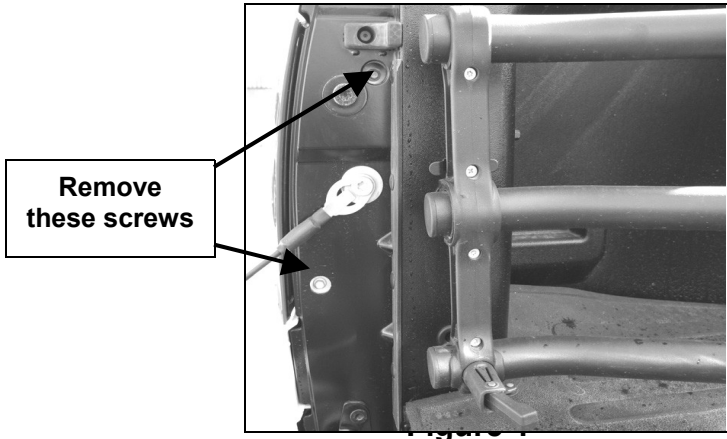
PARTS LIST:

1	Driver Side Taillight Guard	2	3/8" Spacers
1	Passenger Side Taillight Guard	2	#6 x 50mm Sheet Metal Screws
2	Mounting Brackets	2	#6 x 30mm Sheet Metal Screws
2	8-1.25mm x 20mm Bolt Plate	4	#6 Flat Washers
2	8mm Flat Washers	2	4-.70mm x 15mm Phillips Bolt
2	8mm Lock Washers	2	4mm Lock Washers
2	8mm Hex Nut	2	4mm Flat Washers
2	1 1/8" Spacers		

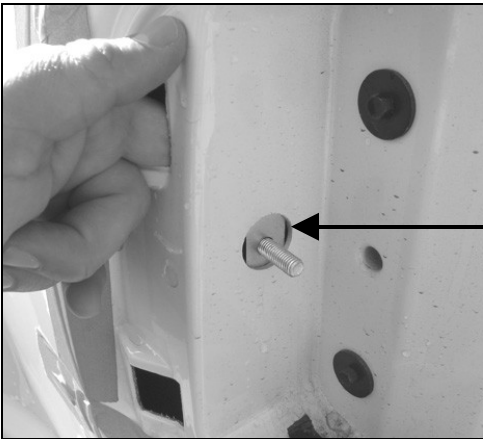
PROCEDURE:

- 1. REMOVE CONTENTS FROM BOX. VERIFY ALL PARTS ARE PRESENT. READ INSTRUCTIONS CAREFULLY.**
- Open the tailgate and remove the driver's side screws holding the taillight assembly by using an 8mm socket wrench (Figure 1).
- Grasp the taillight assembly with one hand and pull gently. **NOTE:** Be sure to pull straight out to avoid possible damage. If it is too tight, then use a large standard flat screwdriver and use something like the backing of a note pad or towel to protect the paint from damage. This is the same procedure required to change a burn out taillight in the assembly.
- Carefully unplug the taillight assembly and set aside.
- Insert (1) 8-1.25mm x 20mm Bolt Plate into the factory hole located on the taillight assembly cavity. Then hold the Bolt Plate with two fingers as shown in figure 2.
- Attach the Support Bracket to Bolt Plate and secure it with the included (1) 8mm Flat Washer and (1) 8mm Lock Washer (Figure 3).
- Once the Mounting Bracket is installed, plug in and re-position the taillight assembly. **NOTE:** Mounting Brackets might need some adjustment.
- Place (1) 1 1/8" Spacer in the upper mounting factory hole and (1) 3/8" Spacer in the lower mounting factory hole (Figure 4).
- Install the Taillight Guard to vehicle by using (1) ST6 x 50mm Sheet Metal Screw on the upper mounting location and (1) ST6 x 30mm Sheet Metal Screw on the lower mounting location (Figure 5).
- Attach Taillight Guard to Support Bracket using the included (1) 4-.70mm x 15mm Phillips Bolt, (1) 4mm Lock Washer, and (1) 4mm Lock Washer (Figure 6).
- Repeat steps 2-10 for passenger side.



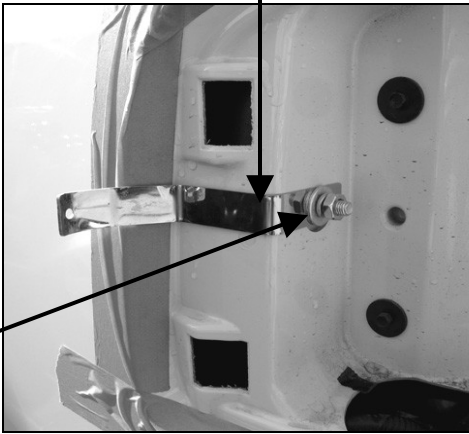


Remove these screws



Bolt Plate

Support Bracket



8mm Hex Nut, 8mm Flat & Lock Washer

Figure 3

Upper 1/8" Spacer Shown



Figure 4

ST6 x 50mm Screw

ST6 x 30mm Screw

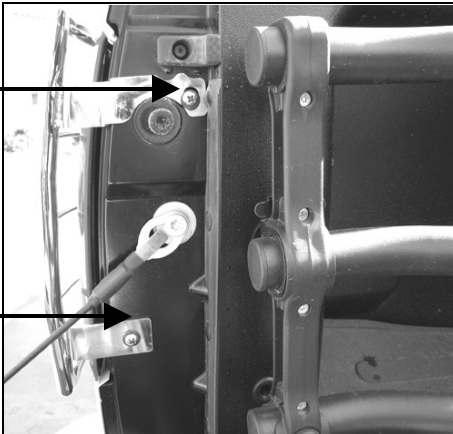


Figure 5

4mm Bolt, 4mm Lock Washer, & 4mm Flat Washer

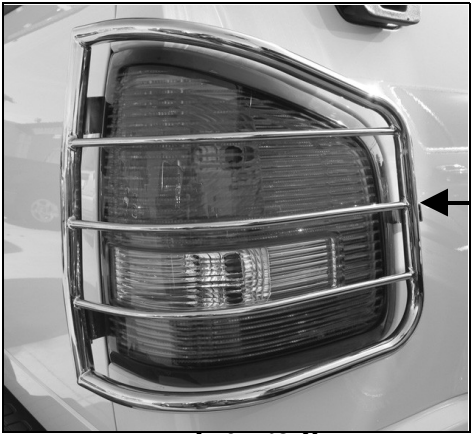


Figure 6