

INSTALLATION INSTRUCTIONS

FRONT BAR PART #

2003-05 GMC 1500 SERIES 2/4 WD

PARTS LIST

2- FRAME MOUNTING BRACKETS	2- 5/16 X 3/4" HEX BOLTS
2- TOP SUPPORT BRACKETS	2- 5/16 HEX NUTS
10- 1/2 X 1 1/4" HEX BOLTS	4- 5/16 FLAT WASHERS
10- 1/2 HEX NUTS	2- 1/4 X 3/4" SCREWS
20- 1/2 FLAT WASHERS	2- 1/4 HEX NUTS
	4- 1/4 FLAT WASHERS

INSTALLING FRAME BRACKETS

1. Remove factory tow hooks from front section of vehicle (if equipped). NOTE: IF RE-USING TOW HOOK, YOU MUST SWITCH DRIVER FOR PASSENGER VISE-VERSA ,SOME MODELS DO NOT ALIGN COMPLETELY. YOU MUST TRIM OFF SMALL PORTION OFF THE TOW HOOK. Refer to illustration.
2. Attach the frame brackets as shown in illustration, using bolts, supplied in kit. Hand-tighten in case you have to adjust the front bar to align it.

INSTALLING THE FRONT BAR

1. Line up the 3 holes on the lower portion of the bar with the 3 holes in the frame brackets (inner edge). Attach front bar using 7/16 x 1 1/4" hex bolts, nuts, & washers. Hand tighten only.
2. Open hood and remove the rivets securing the top plastic trim panel (temporarily) from the vehicle to access the factory bumper bolts.
3. Proceed to install upper support brackets, place driver side bracket to bumper existing hole using 5/16 x 3/4 hex bolt, nuts and washers. Using the 1/4 x 3/4 screws, nuts, and washers attach bracket to the back center grill guard flange as shown in illustration 3.
4. Align front bar assembly with front of the vehicle and secure all fasteners.
5. Re-attach the plastic trim panel.

SEE ILLUSTRATIONS

ILLUSTRATION 3- TOP BRACKETS

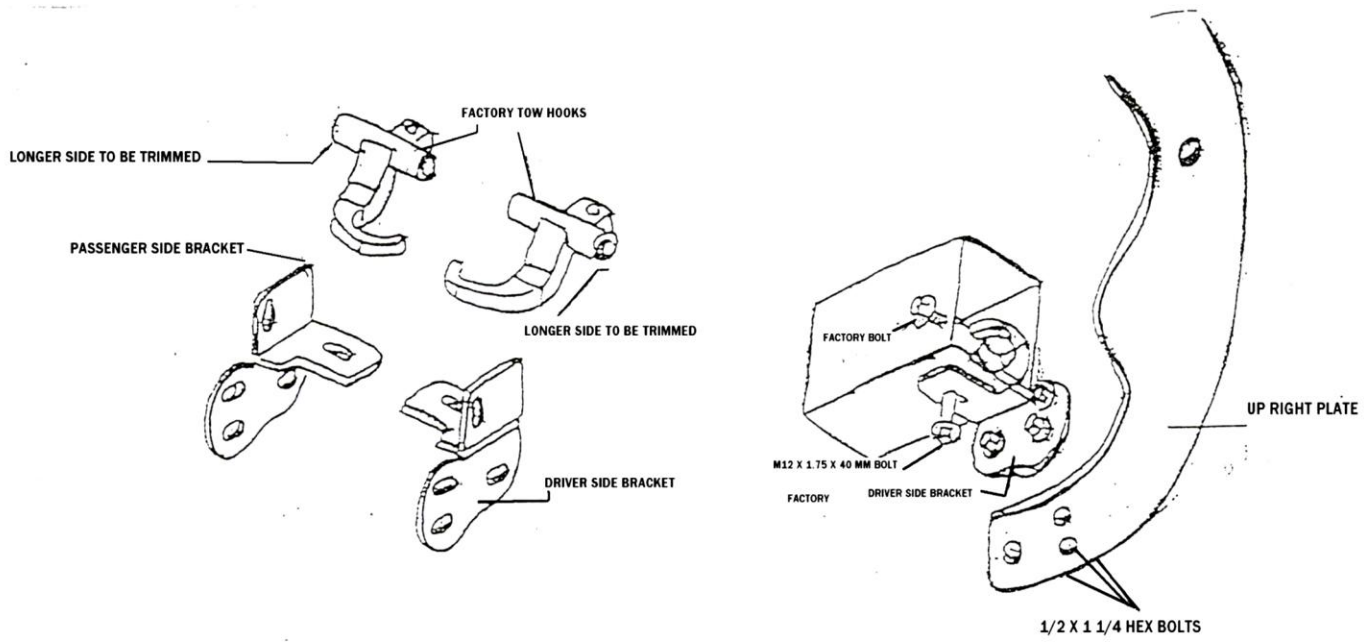


ILLUSTRATION 3- TOP BRACKETS

