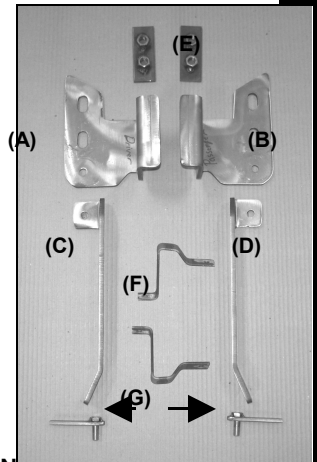


INSTALLATION INSTRUCTIONS

GRILLE GUARD 07 FORD EDGE PART NUMBER

PARTS LIST:

1	Sport Bar	4	6mm ID x 18mm OD x 1.5mm Flat Washers
1	Driver/Left Mounting Bracket (A)	2	6-1.00 x 20mm Button Head Bolts
1	Passenger/Right Mounting Bracket (B)	2	10-1.50mm x 30mm Hex Head Bolts
1	Driver/Left Support Bracket (C)	4	10mm Nylock Nuts
1	Passenger/Right Support Bracket (D)	6	10mm ID x 26mm OD x 3mm Flat Washers
2	12mm Double Nut Plates (E)	8	12-1.75mm x 35mm Hex Head Bolts
2	Top Brackets (F)	4	12mm Lock Washers
2	10mm Bolt Plates (G)	4	12mm Nylock Nuts
2	6mm Nylock Nuts	12	12mm ID x 29mm OD x 3mm Flat Washers

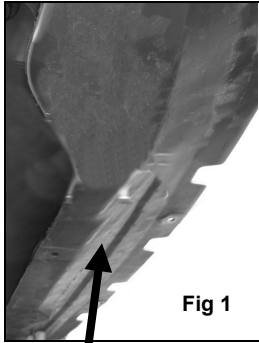


PROCEDURE:

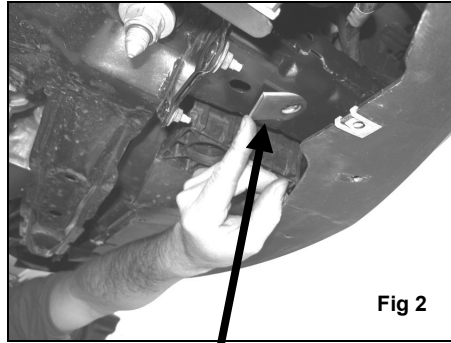
- REMOVE CONTENTS FROM BOX. VERIFY ALL PARTS ARE PRESENT. READ INSTRUCTIONS CAREFULLY BEFORE STARTING INSTALLATION. DO NOT ATTEMPT INSTALLATION ALONE; PERSONAL INJURY OR DAMAGE TO THE TRUCK MAY RESULT.**
- NOTE:** The factory lower air dam and the bottom plastic shroud (Figure 1) must be removed to install this Grille Guard. From underside of vehicle, use an 8mm socket/wrench to remove 7 screws and a flat screw driver to remove the 3 clips from across the bottom plastic shroud. Once you have removed the plastic shroud, use a 10mm wrench to remove the 10 bolts and 8mm socket to remove 2 crews across the lower air dam. **NOTE:** You will not be reinstalling the front air dam.
- Insert (1) 12mm Double Nut Plate into front of passenger side frame and align the holes on the Double Nut Plate with the factory holes on the frame (Figure 2).
- Determine passenger and driver side Mounting Brackets. Hang passenger side Mounting Bracket into position by partially threading (2) 12-1.75mm x 35mm Hex Head Bolts, (2) 12mm Lock Washers, and (2) 12mm Flat Washers through factory holes and into previously inserted Double Nut Plate (Figure 3).
- Repeat steps three and four for driver side Mounting Bracket.
- NOTE:** To re-install the factory plastic shroud cutting is required. Insert factory plastic shroud from front of vehicle and slide it between Mounting Brackets and vehicle. Center plastic shroud and make sure the holes on the plastic shroud will line up with their original mounting holes on the vehicle after cutting, and then mark the cutting location (Figure 4).
- Remove plastic shroud and place it on a working area. Using a hacksaw, cut about 5" starting from the back and towards the front of plastic shroud.
- Re-install plastic shroud using the factory hardware removed in step two.
- Locate passenger side Support Bracket and attach it to rear hole on the previously attached Mounting Bracket using the included (1) 10-1.50mm x 30mm Hex Head Bolt, (1) 10mm Nylock Nut, and (2) 10mm Flat Washers (Figure 5). Do not tighten at this time.
- Extend Support Bracket towards the rear of the vehicle. The opposite mounting hole on the Support Bracket should reach its mounting location on the frame. Insert (1) Bolt Plate into factory hole on the frame (Figure 6).
- Attach the rear mounting location on the Support Bracket to previously inserted Bolt Plate. Secure Support Bracket using (1) 10mm Flat Washer and (1) 10mm Nylock Nut (Figure 7). Do not tighten at this time.
- Repeat steps 9-11 for driver side Support Bracket.
- Open the hood and remove the two outer factory bolts located on the upper black section of chrome grille shell. Attach Top Brackets to these factory holes using the factory bolts removed in this step (Figure 8).
- With help position Sport Bar on the outer side on Mounting Brackets. Attach Sport Bar to Mounting Brackets using (4) 12mm x 35mm Hex Head Bolts, (4) 12mm Nylock Nuts, and (8) 12mm Flat Washers (Figure 8). Do not tighten at this time.
- Attach Grille Guard to Top Brackets using the included (2) 6mm x 20mm Button Head Bolts, (2) 6mm Nylock Nuts, (4) 6mm Flat Washers.
- Level and adjust Sport Bar, and then tighten all hardware at this time.

17. Do periodic inspections to the installation to make sure that all hardware is secure and tight.

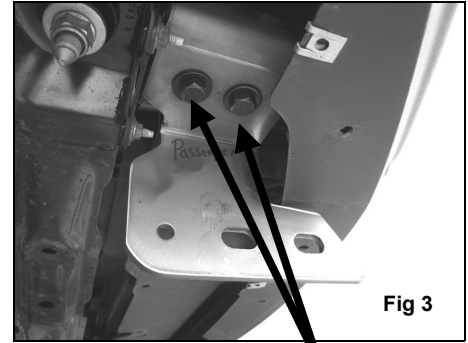
(Passenger Side Mounting Bracket and Passenger Side Support Bracket installation Shown)



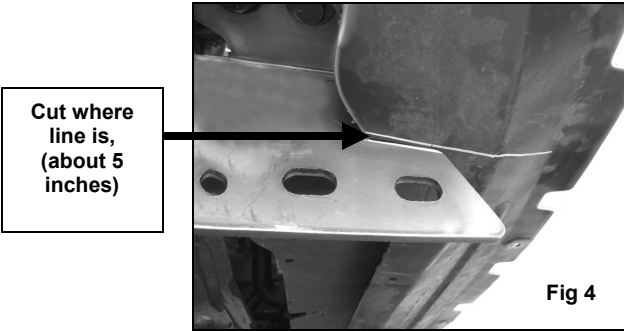
Plastic Shroud



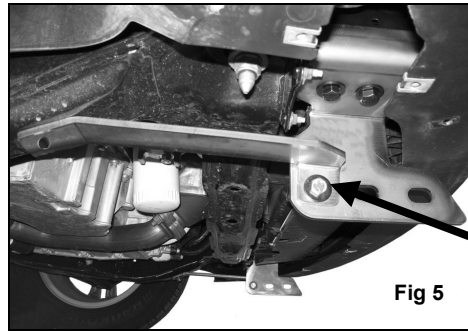
12mm Double Nut Plate



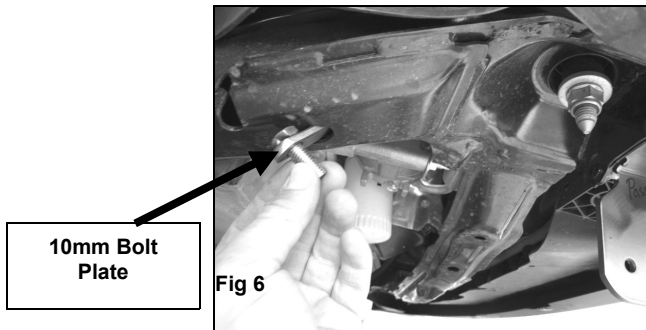
12mm x 35mm Hex Head Bolts
12mm Lock Washers
12mm Flat Washers



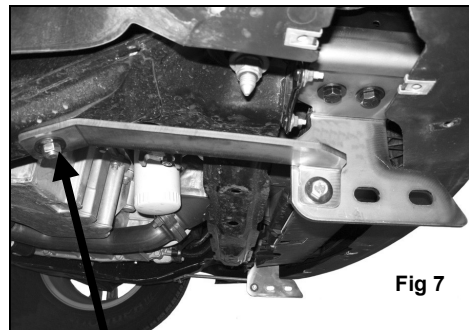
Cut where line is, (about 5 inches)



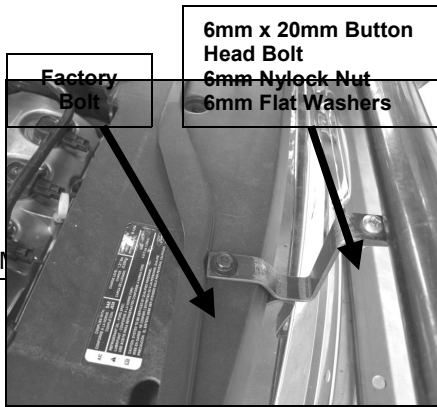
10mm x 30mm Hex Head Bolts
10mm Nylock Nut
10mm Flat Washers



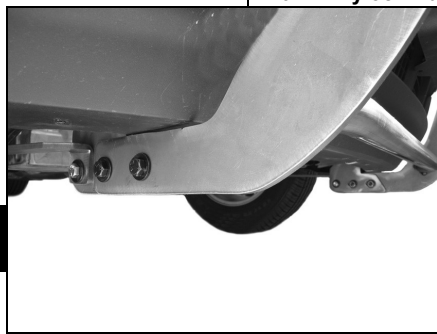
10mm Bolt Plate



(Bolt Plate)
10mm Flat Washer
10mm Nylock Nut



(A)



Installation Complete



12mm x 35mm Hex Head
Bolts
12mm Nylock Nuts
12mm Flat Washers

Fig 8

Fig 9