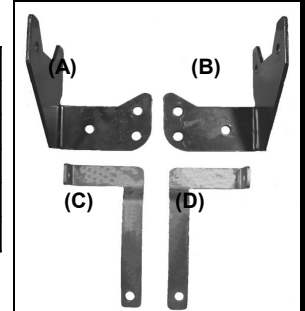


INSTALLATION INSTRUCTIONS

GRILLE GUARD 04-07 DODGE DURANGO PART NUMBER

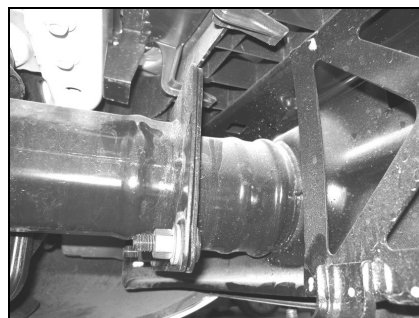
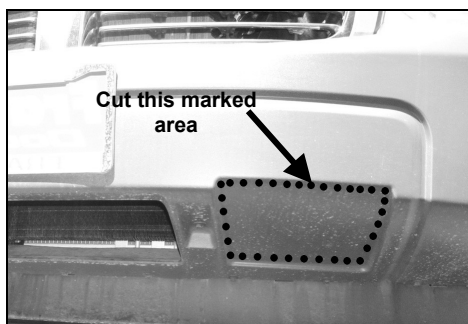
PARTS LIST:

1	Grille Guard	6	12-1.75mm x 35mm Hex Head Bolts
1	Driver/Left Mounting Bracket (A)	6	12mm Nylock Nuts
1	Passenger/Right Mounting Bracket (B)	12	12mm ID x 29mm OD x 3mm Flat Washers
1	Driver/Left Top Bracket (C)	2	10-1.50mm x 25mm Button Head Bolts
1	Passenger/Right Top Bracket (D)	2	10mm Nylock Nuts
		4	10mm ID x 21mm OD x 1.5mm Flat Washers



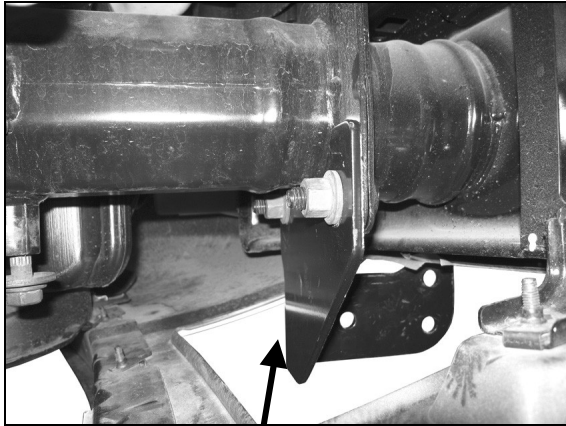
PROCEDURE:

- 1. REMOVE CONTENTS FROM BOX. VERIFY ALL PARTS ARE PRESENT. READ INSTRUCTIONS CAREFULLY BEFORE STARTING INSTALLATION. DO NOT ATTEMPT INSTALLATION ALONE; PERSONAL INJURY OR DAMAGE TO THE TRUCK MAY RESULT.**
Proceed to Step 5 if vehicle is equipped with factory hooks.
2. Locate the square shape area underneath the front color bumper (**Figure 1**). Carefully drill a hole on each corner of the marked area to be cut. Use a small tooth saw to cut from hole to hole.
3. Once you cut this area, locate the two factory nuts right above the cutout area and remove them from vehicle (**Figure 2**).
4. Repeat steps 2 & 3 for opposite side, then proceed to Step 6
5. Locate and remove the factory tow hooks from vehicle. **NOTE:** You will not be reinstalling the tow hooks back to the vehicle.
6. Partially hang driver side Mounting Bracket to the two factory bolts previously holding the tow hook (**Figure 3**). Repeat this step for passenger side Mounting Bracket.
7. Open the hood and remove the plastic shroud covering the radiator (**Figure 4**).
8. Locate one factory bolt on each side in the inner fender support and remove (**Figure 5**). **NOTE:** You may remove the four factory bolts across the top on the grille shell and gently pull towards the front of the vehicle to gain access behind the grille shell.
9. Insert the driver side Top Bracket through the bottom grille opening. Orient Top Bracket to the previously remove bolt mounting location. Secure Top Bracket with factory bolt removed in step 8 (**Figure 5 & 6**).
10. With help position Grille Guard on the inner side of Mounting Brackets. Attach Grille Guard to Mounting Brackets using the included (6) 12mm x 35mm Hex Head Bolts, (6) 12mm Nylock Nuts, and (12) 12mm Flat Washers (**Figure 7**). Do not tighten at this time.
11. Attach Top Bracket to the inner side of the vertical plate using the included (2) 10mm x 25mm Button Head Bolts, (2) 10mm Nylock Nuts, (4) 10mm Flat Washers (**Figure 6**). Do not tighten at this time.
12. Level and align Grille Guard; and then tighten all hardware at this time.
13. Re-install plastic shroud back to the vehicle.
14. Do periodic inspections to the installation to make sure that all hardware is secure and tight.



Remove these
factory nuts

Figure 1



Mounting Bracket attached with factory bolts and nuts

Figure 3

Figure 2

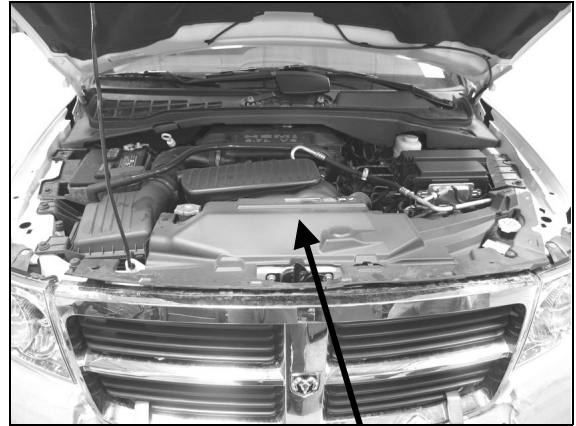
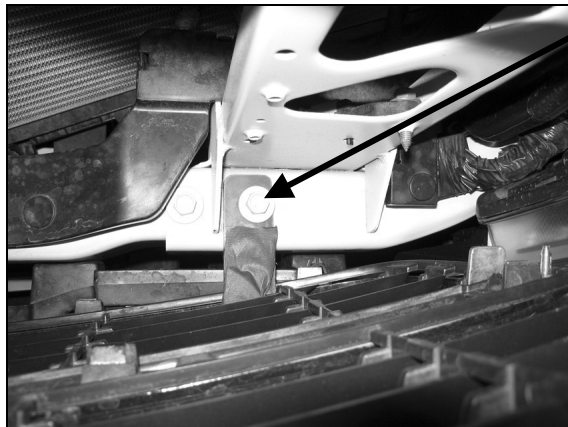


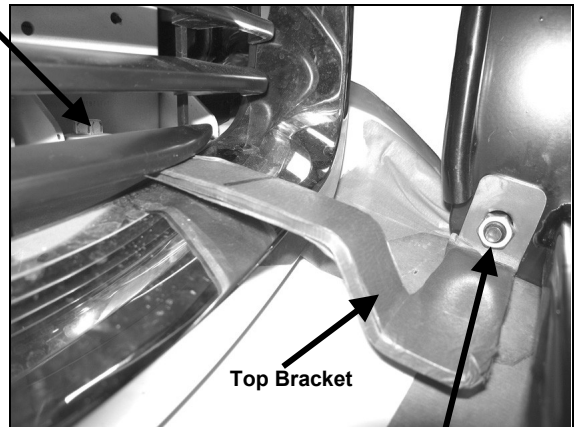
Figure 4

Remove plastic shroud



Factory Bolt

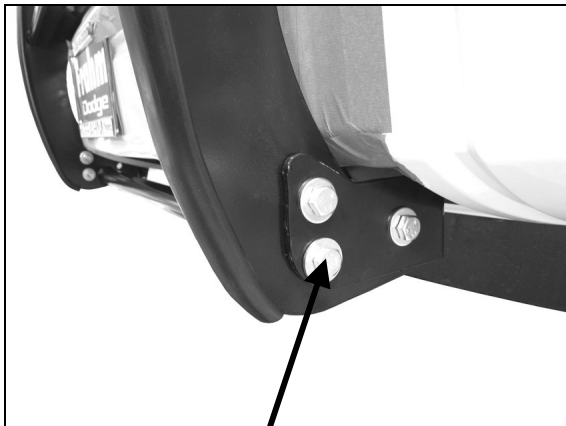
Figure 5



Top Bracket

Figure 6

10mm x 25mm Button Head Bolt
10mm Nylock Nut
10mm Flat Washers



12mm x 35mm Hex
Head Bolts
12mm Nylock Nuts
12mm Flat Washers

Figure 7

Figure 8