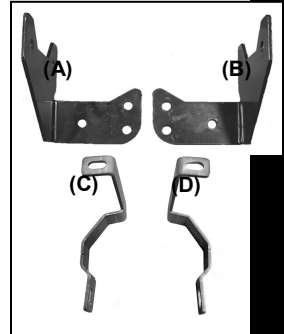


# INSTALLATION INSTRUCTIONS

## GRILLE GUARD 07 DODGE DURANGO PART NUMBER

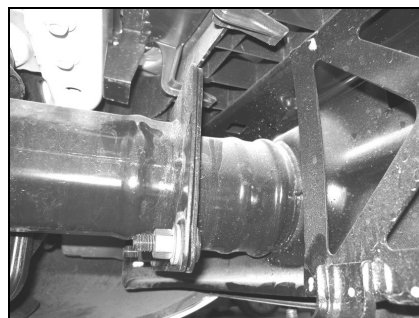
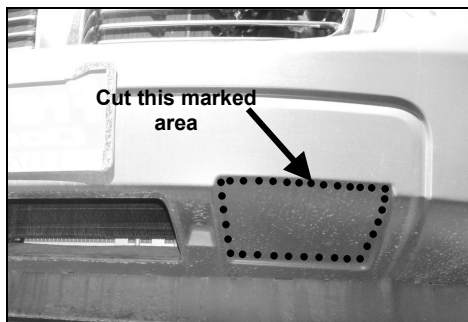
### PARTS LIST:

1	Grille Guard	6	12-1.75mm x 35mm Hex Head Bolts
1	Driver/Left Mounting Bracket (A)	6	12mm Nylock Nuts
1	Passenger/Right Mounting Bracket (B)	12	12mm ID x 29mm OD x 3mm Flat Washers
1	Driver/Left Top Bracket (C)	2	10-1.50mm x 25mm Button Head Bolts
1	Passenger/Right Top Bracket (D)	2	10mm Nylock Nuts
		4	10mm ID x 21mm OD x 1.5mm Flat Washers



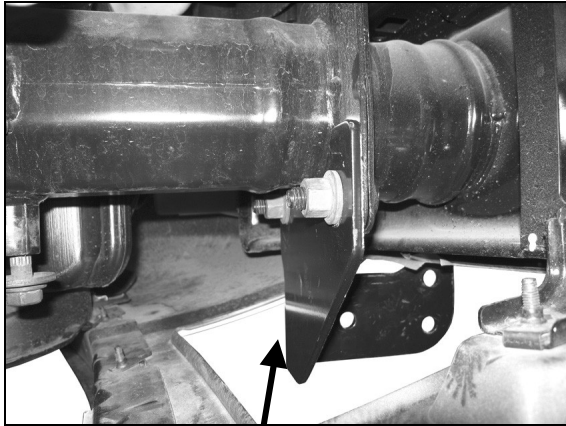
### PROCEDURE:

- 1. REMOVE CONTENTS FROM BOX. VERIFY ALL PARTS ARE PRESENT. READ INSTRUCTIONS CAREFULLY BEFORE STARTING INSTALLATION. DO NOT ATTEMPT INSTALLATION ALONE; PERSONAL INJURY OR DAMAGE TO THE TRUCK MAY RESULT.**  
***Proceed to Step 5 if vehicle is equipped with factory hooks.***
- Locate the square shape area underneath the front color bumper (**Figure 1**). Carefully drill a hole on each corner of the marked area to be cut. Use a small tooth saw to cut from hole to hole.
- Once you cut this area, locate the two factory nuts right above the cutout area. Remove the two factory nuts (**Figure 2**).
- Repeat steps 2 & 3 for opposite side, then proceed to Step 6.
- Locate and remove the factory tow hooks from vehicle. **NOTE:** You will not be reinstalling the tow hooks back to the vehicle.
- Partially hang driver side Mounting Bracket to the two factory bolts previously holding the tow hook (**Figure 3**). Repeat this step for passenger side Mounting Bracket.
- Open the hood and remove the plastic shroud covering the radiator (**Figure 4**).
- Locate one factory bolt on each side in the inner fender support and remove (**Figure 5**). **NOTE:** You may remove the four factory bolts across the top on the grille shell and gently pull towards the front of the vehicle to gain access behind the grille shell.
- Insert the driver side Top Bracket through the bottom grille opening. Orient Top Bracket to the previously remove bolt mounting location. Secure Top Bracket with factory bolt removed in step 8 (**Figure 5 & 6**).
- With help position Grille Guard on the inner side of Mounting Brackets. Attach Grille Guard to Mounting Brackets using the included (6) 12mm x 35mm Hex Head Bolts, (6) 12mm Nylock Nuts, and (12) 12mm Flat Washers (**Figure 7**). Do not tighten at this time.
- Attach Top Bracket to the inner side of the vertical plate using the included (2) 10mm x 25mm Button Head Bolts, (2) 10mm Nylock Nuts, (4) 10mm Flat Washers (**Figure 6**). Do not tighten at this time.
- Level and align Grille Guard; and then tighten all hardware at this time.
- Re-install plastic shroud back to the vehicle.
- Do periodic inspections to the installation to make sure that all hardware is secure and tight.



Remove these  
factory nuts

Figure 1



Mounting Bracket attached with factory bolts and nuts

Figure 3

Figure 2

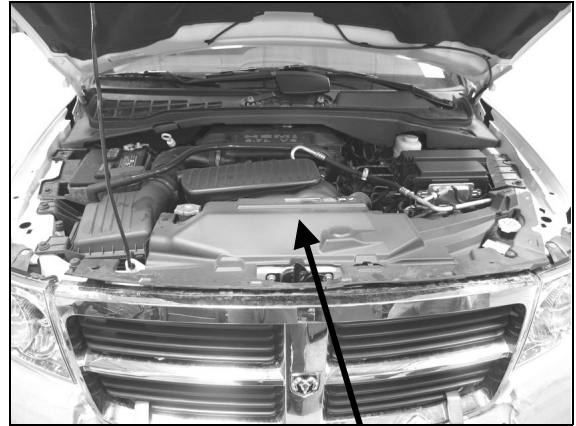


Figure 4

Remove plastic shroud

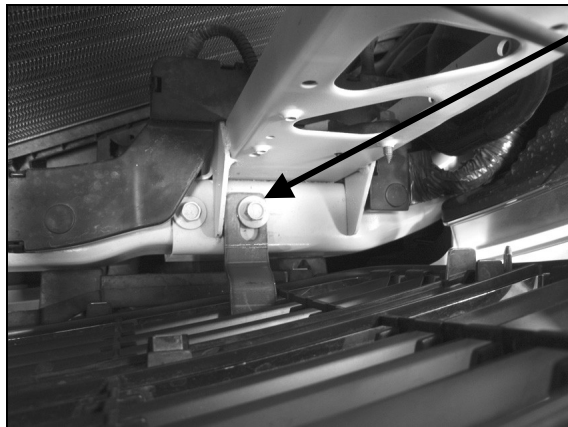


Figure 5

Factory Bolt

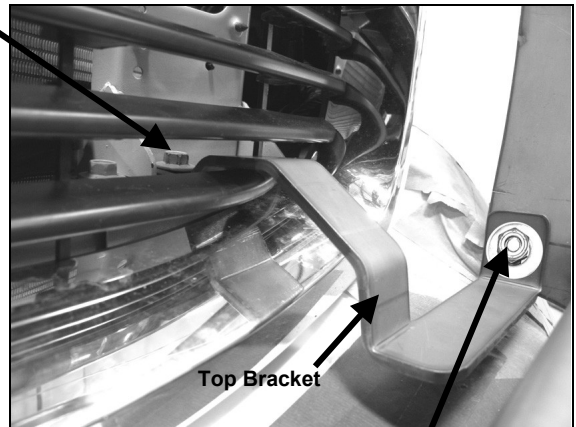
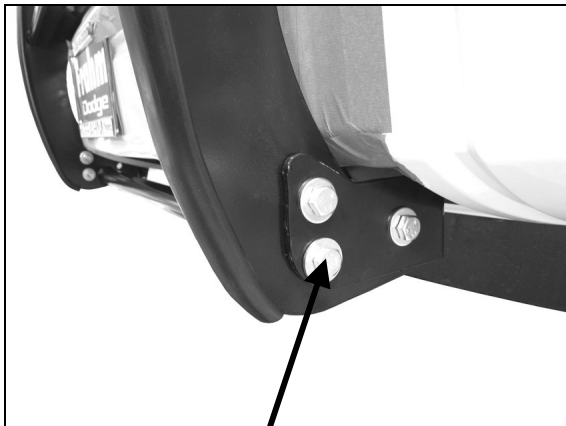


Figure 6

Top Bracket

10mm x 25mm Button Head Bolt  
10mm Nylock Nut  
10mm Flat Washers



12mm x 35mm Hex  
Head Bolts  
12mm Nylock Nuts  
12mm Flat Washers

Figure 7

Figure 8