

Installation Instructions

Bull Bar

2006-2007 Toyota Highlander 2/4WD Hybrid

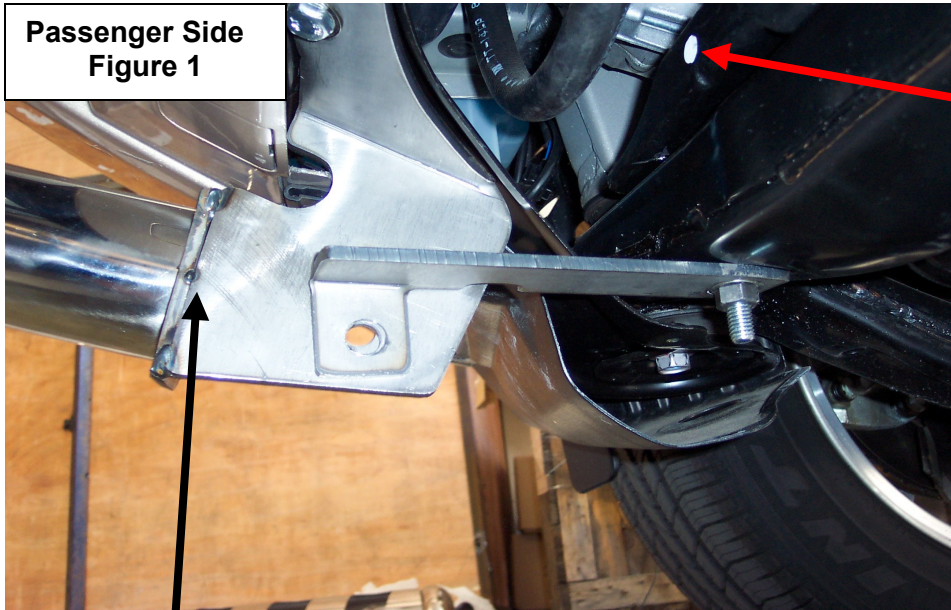
Part List:

1	Bull Bar
2	Frame Mounting Brackets
2	Frame Support Brackets
2	12-1.75mm x 35mm Hex Head Bolts
2	12-1.75mm x 90mm Hex Head Bolts
2	12-1.75mm x 50mm Hex Head Bolts
6	12mm ID x 29mm OD x 3mm Flat Washers
4	12mm ID x 44mm x 5mm Fender Washers
6	12mm Lock washer
4	12mm Hex Nuts
2	10-1.25mm x 35mm Hex Bolts (fine thread)
2	10mm ID x 26mm OD x 3mm Flat Washers
2	10mm Lock Washers

Procedure:

1. Remove contents from box and check for damage. Verify all parts are present and read instructions carefully.
2. Remove front license plate and license plate bracket. It is not required but strongly recommended. If Local/State Law requires a license plate, license plate kit #70000 is available.
3. Remove lower plastic liner located underneath front of the vehicle for Axis.
4. Loosen plastic retainer bracket located on passenger side and turn towards front of vehicle fro axis. (See Fig#1)
5. Install frame support bracket using (1) 12mm x 90mm Hex Head Bolt, (2) 12mm Fender Washers, (1) 12mm Hex Nut, and (1) 12mm Lock Washer. Leave loose. (See Fig#1)
6. Repeat procedure#5 on opposite side.
7. Reinstall plastic retainer bracket on passenger side and tighten.
8. Install frame mounting bracket using (1)M10 -1.25 x 30mm, (1) M10 flat washer, (1) Lock washer (Leave Loose) bolt frame mount bracket onto frame support bracket using (1) 12mm x 35mm Hex Bolt, (1) 12mm Hex Nut, (2) 12mm flat washers, and (1) 12mm Lock Washer, leave loose. (See Fig #2, Driver side shown)
9. Repeat procedure #8 on opposite side
10. Attach Bull Bar onto driver and passenger frame mounting brackets using (2) 12mm x 50mm Hex Head Bolts, (2) 12mm Flat Washers, and (1) 12mm Lock Washer, leave loose.
11. Level and adjust bull bar as desired, tighten torque bolts.

**Passenger Side
Figure 1**

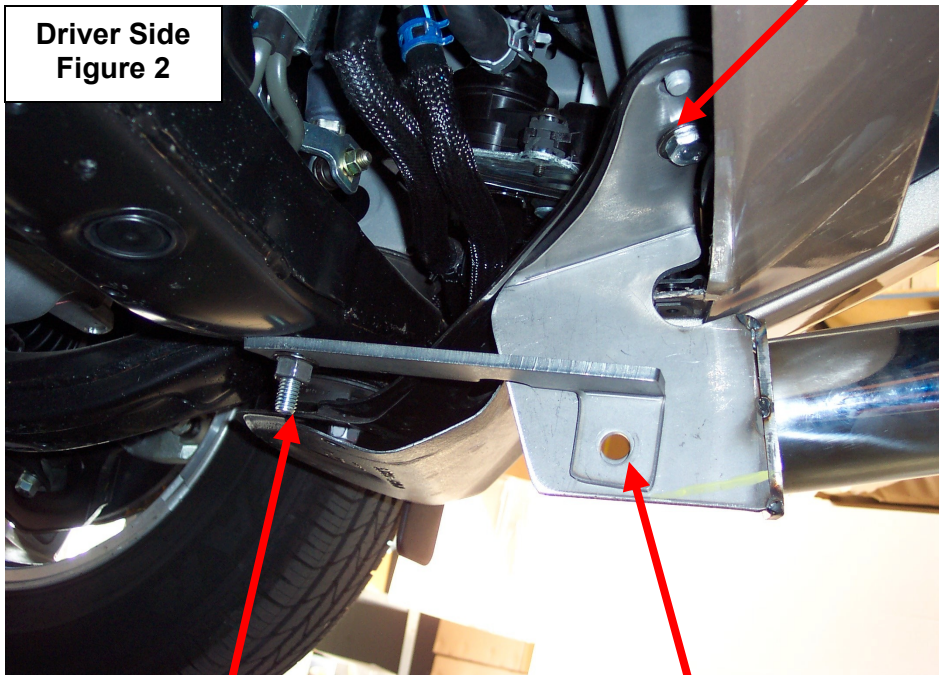


**Plastic
Retainer
Bracket**

**To attach Bull Bar to
Bracket use the included:
12mm x 50mm Hex Bolt
12mm Flat Washer
12mm Lock Washer**

**10mm x 35mm Hex Bolt
10mm Flat Washer
10mm Lock Washer**

**Driver Side
Figure 2**



**(12mm x 90mm Bolt)
12mm Hex Nut
12mm Fender Washers
12mm Lock Washer**

**12mm x 35mm Hex Bolt
12mm Hex Nut
12mm Flat Washers
12mm Lock Washer**