

INSTALLATION INSTRUCTIONS

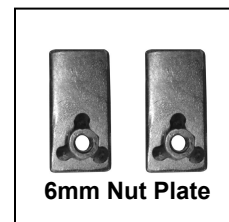
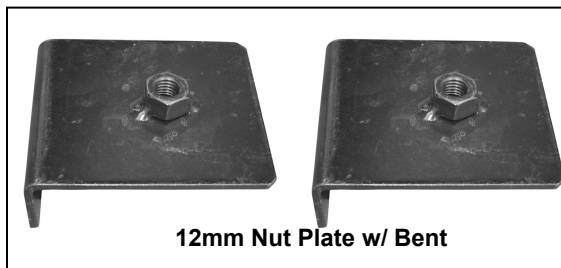
REAR BUMPER GUARD (Double Tube)

06-07 HUMMER H3

PART

PARTS LIST:

1	Rear Bumper Guard	2	12mm Nut Plates w/ Bent
1	Driver/Left Mounting Bracket	6	12-1.75mm x 35mm Hex Head Bolts
1	Passenger/Right Mounting Bracket	6	12mm Lock Washers
2	6mm Nut Plates	4	12mm Hex Nuts
2	6-1.00mm x 25mm Hex Head Bolts	10	12mm ID x 29mm OD x 3mm Flat Washers
2	6mm Lock Washers		
2	6mm ID x 18mm OD x 1.5mm Flat Washers		



PROCEDURE:

1. **REMOVE CONTENTS FROM BOX. VERIFY ALL PARTS ARE PRESENT. READ INSTRUCTIONS CAREFULLY BEFORE STARTING INSTALLATION.**
2. **IMPORTANT!** *Due to the passenger side mounting location being too close to the muffler, before starting the installation make sure the muffler is not hot.*
3. Starting on the passenger side, locate a rectangular hole in the horizontal top section of the rear cross member and a small round hole in the bottom horizontal lip of the vertical section of the rear cross member (**Figure 1**). **NOTE:** *On 07-On models you would need to drill a ¼" hole in the passenger side lip section of the rear cross member.*
4. Locate one of the 12mm Nut Plates with Bent and place it on top of the rear cross member right above the rectangular hole. Align welded nut in the plate with rectangular hole in the cross member (**Figure 2**).
5. Partially hang passenger side Mounting Bracket to Nut Plate using the included (1) 12mm x 35mm Hex Head Bolt, (1) 12mm Lock Washer, and (1) 12mm Flat Washer (**Figure 3**).

07 Models Only:

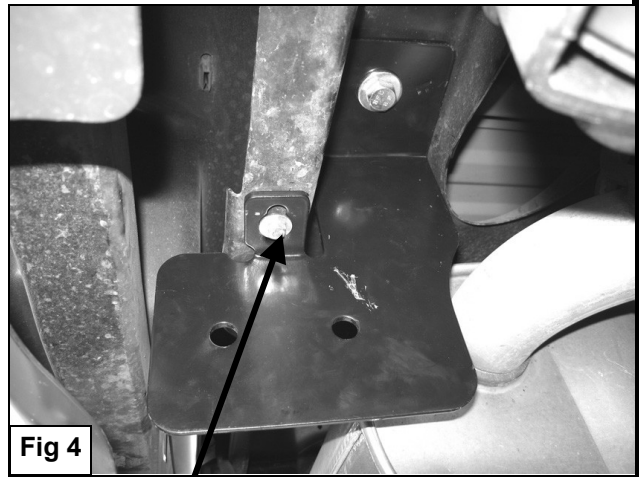
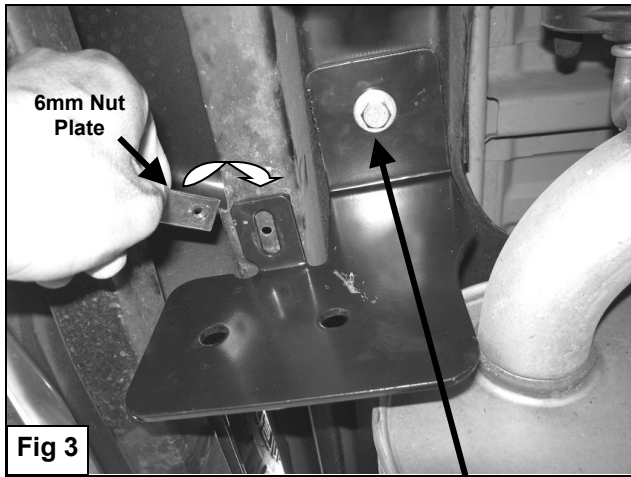
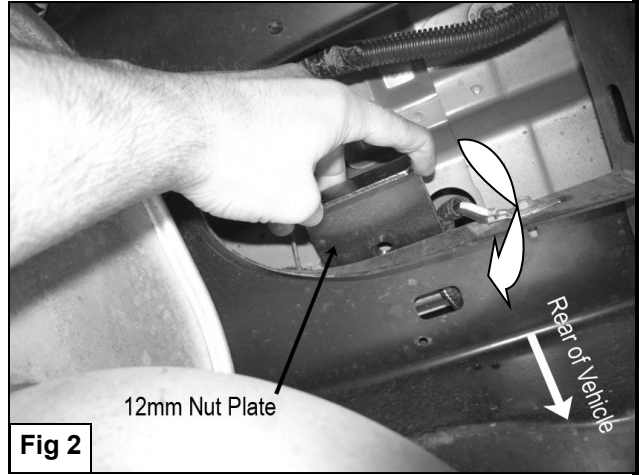
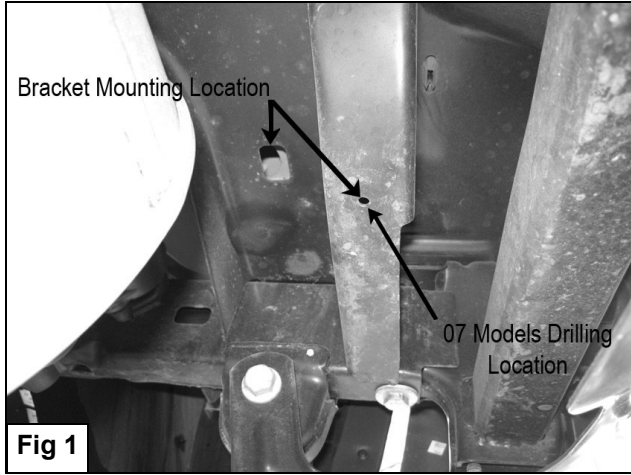
- a) Use the smaller mounting tab in the bracket as a template to mark the drilling location on the lip of the vertical section of the rear cross member.
 - b) Remove Mounting Bracket and set aside.
 - c) Carefully drill out the marked location using a ¼" drill bit. **IMPORTANT:** *Any cutting or drilling tool may break or shatter. Government regulations require safety glasses & equipment at all times when cutting or drilling.*
 - d) Re-install the Mounting Bracket back to the vehicle using the hardware listed in step 5.
6. Place one of the 6mm Nut Plates on top of the lip of vertical cross member right above the smaller mounting tab on the Bracket. Align the welded nut in the plate with the factory or previously drilled hole (**Figure 3**).
 7. Attach the lower mounting tab on the Bracket to the 6mm Nut Plate using the included (1) 6mm x 25mm Hex Head Bolt, (1) 6mm Lock Washer, and (1) 6mm Flat Washer (**Figure 4**). Do not tighten at this time.
 8. Repeat steps 2 – 7 for driver side. **NOTE:** No drilling required on the driver side.
 9. With help position Rear Bumper Guard on the outer side of Mounting Brackets. Use the included (4) 12mm x 35mm Hex Head Bolts, (4) 12mm Lock Washers, (4) 12mm Hex Nuts, and (4) 12mm Flat Washers (**Figure 5**). Do not tighten at this time.
 10. Align Rear Bumper Guard properly: and then tighten all hardware at this time.
 11. Do periodic inspections to the installation to make sure that all hardware is secure and tight.

To protect your investment, wax this product after installing. Regular waxing is recommended to add a protective layer over the finish. Do not use any type of polish or wax that may contain abrasives that could damage the finish.

For stainless steel: Aluminum polish may be used to polish small scratches and scuffs on the finish. Mild soap may be used also to clean the Rear Bumper Guard.

For gloss black finishes: Mild soap may be used to clean the Rear Bumper Guard.

(Passenger Side Installation Shown)



(12mm Nut Plate)
 12mm x 35mm Hex Bolt
 12mm Lock Washer
 12mm Flat Washer

(6mm Nut Plate)
 6mm x 25mm Hex Bolt
 6mm Lock Washer
 6mm Flat Washer

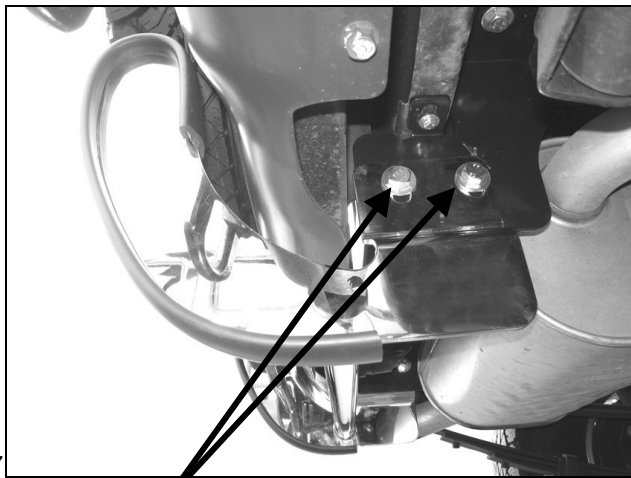


Fig 5

12mm x 35mm Hex Bolt
12mm Lock Washer
12mm Hex Nut
12mm Flat Washers

Fig 6

Installation Complete